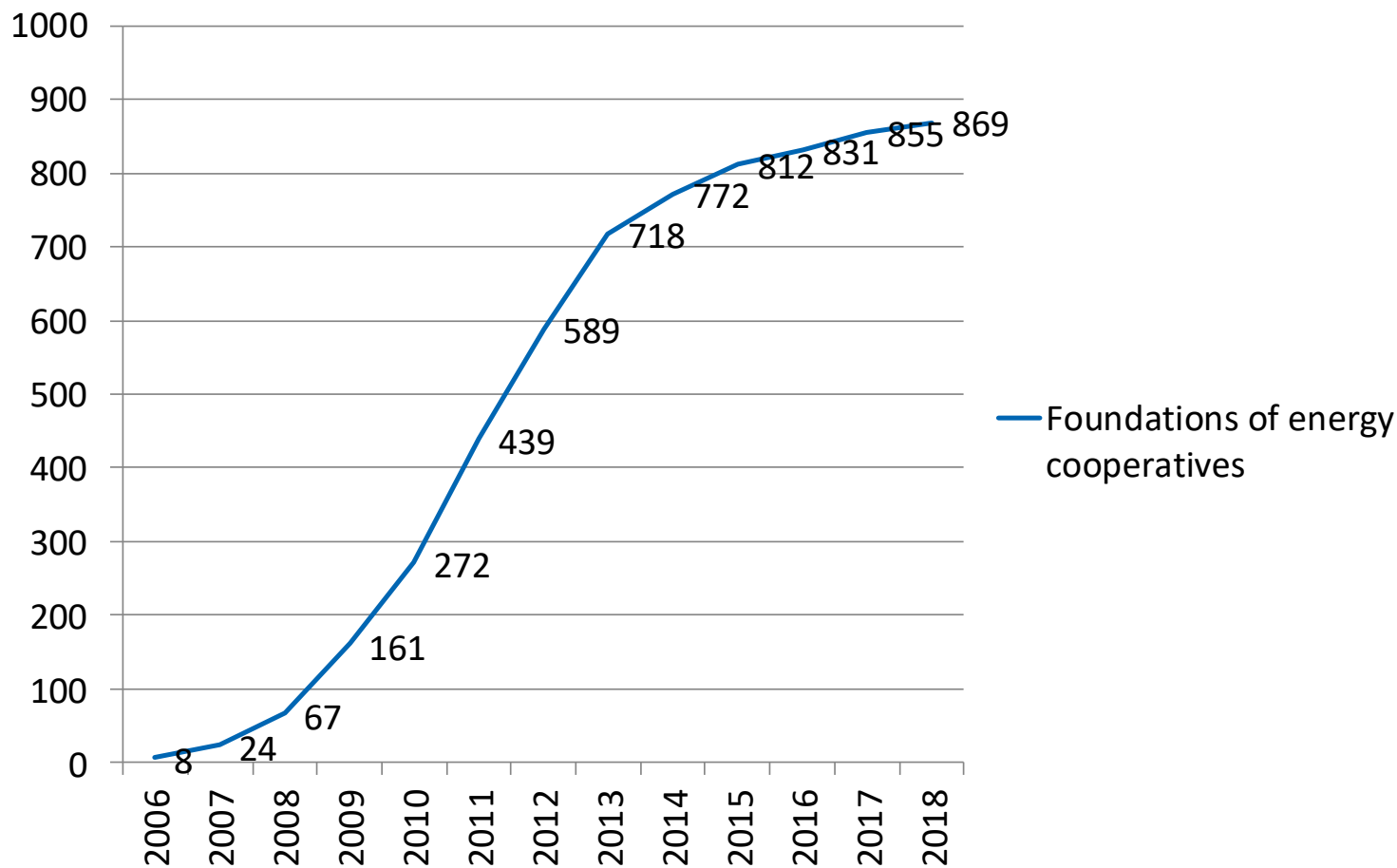

Energy cooperatives

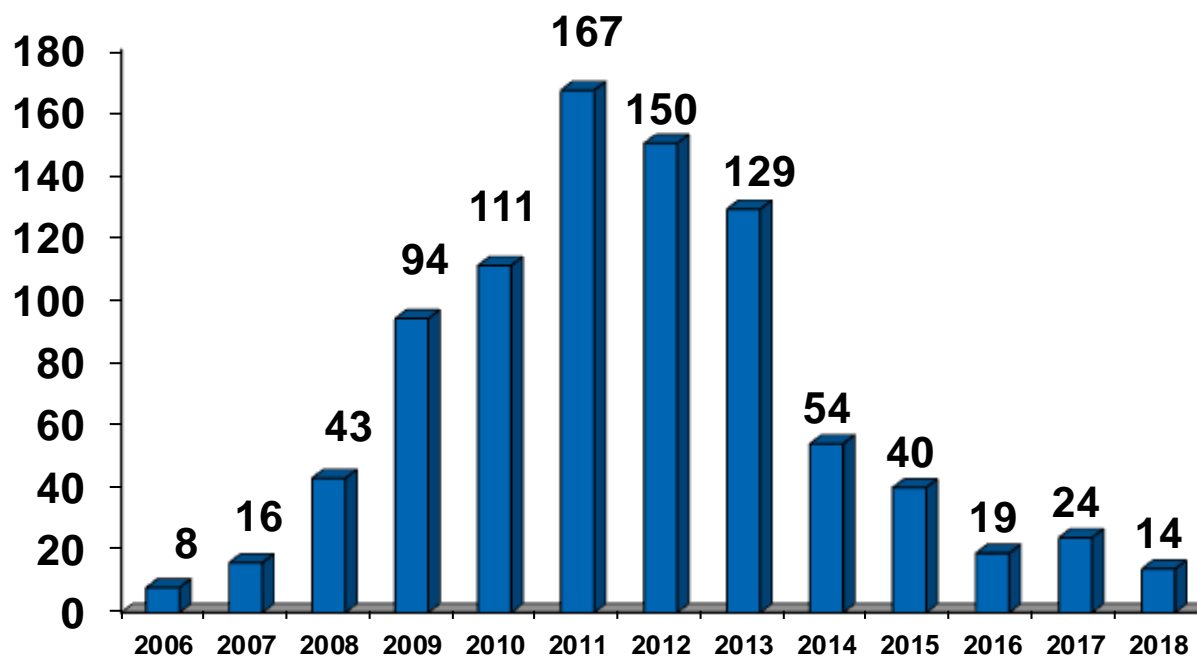
Results of the DGRV-Survey (at December 31, 2018)

DGRV – Deutscher Genossenschafts- und Raiffeisenverband e. V.

Foundations of energy cooperatives since 2006 (cumulated)

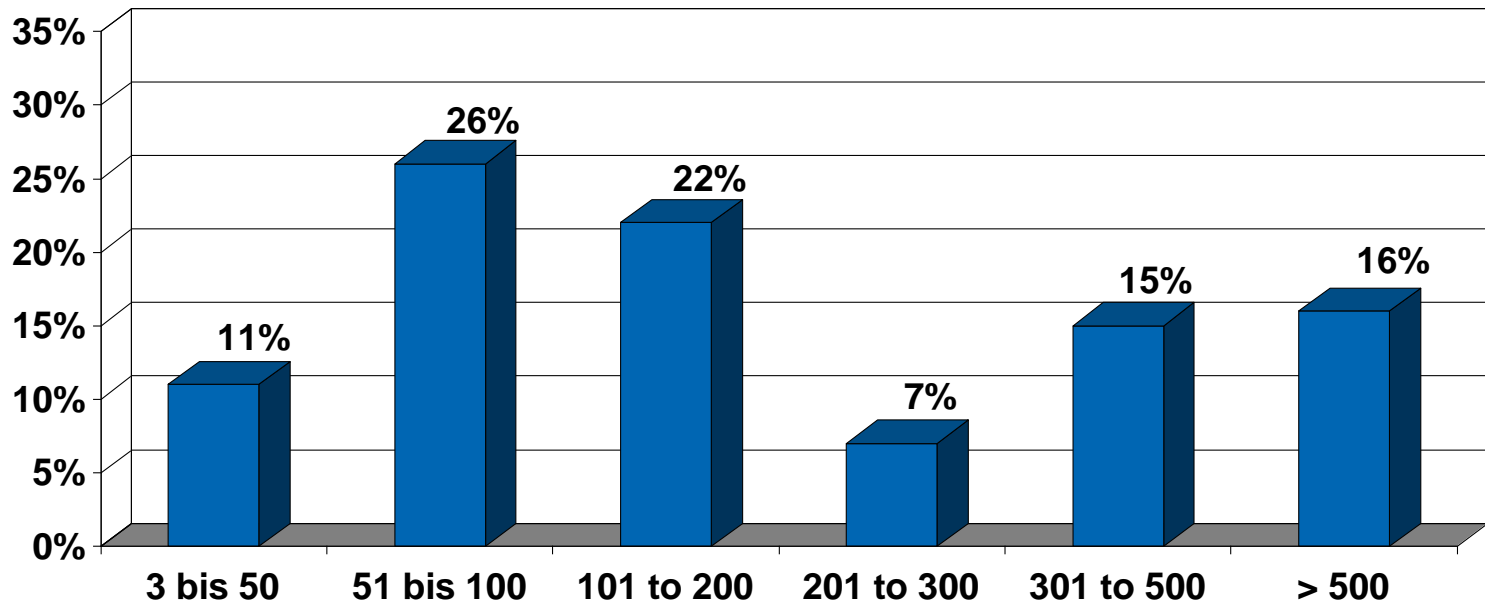


Foundation figures in the field of Renewable Energy

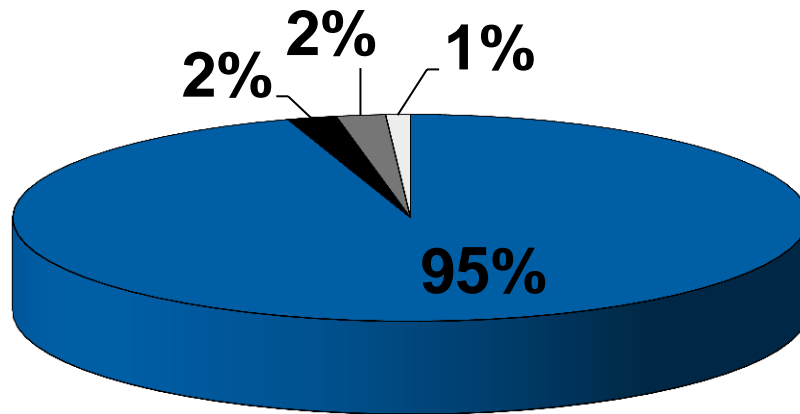


Members at the time of the survey

- Average: 296
- Minimum: 3
- Maximum: 2.882
- Spread:



Membership structure



■ private individuals

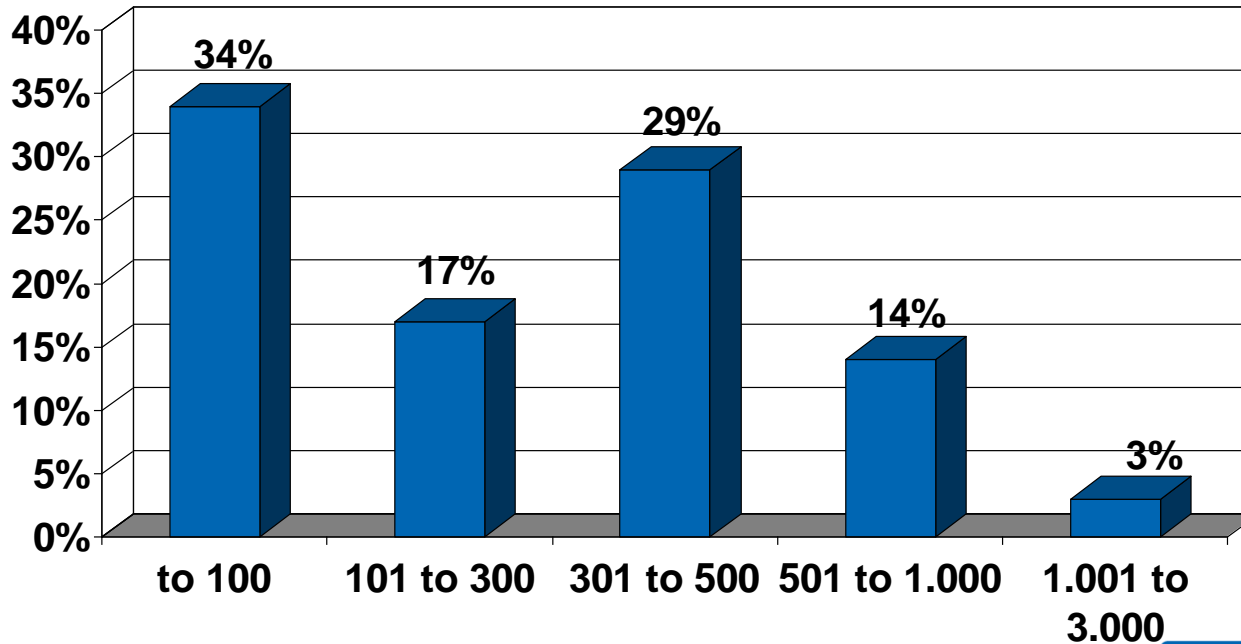
■ companies/banks

■ farms

□ local authorities/public institutions/churches

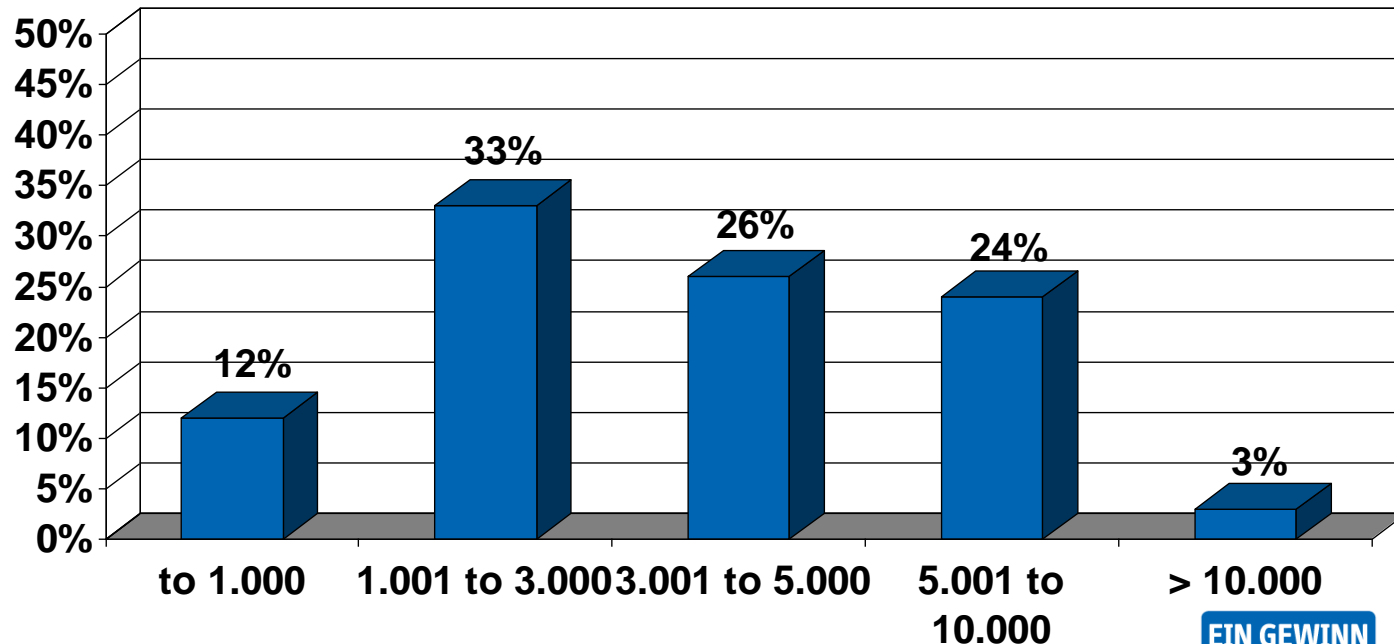
Distribution of minimum participations (in €)

- Average: 511 Euro
- Minimum: 10 Euro
- Maximum: 6.000 Euro
- Spread (in Euro):



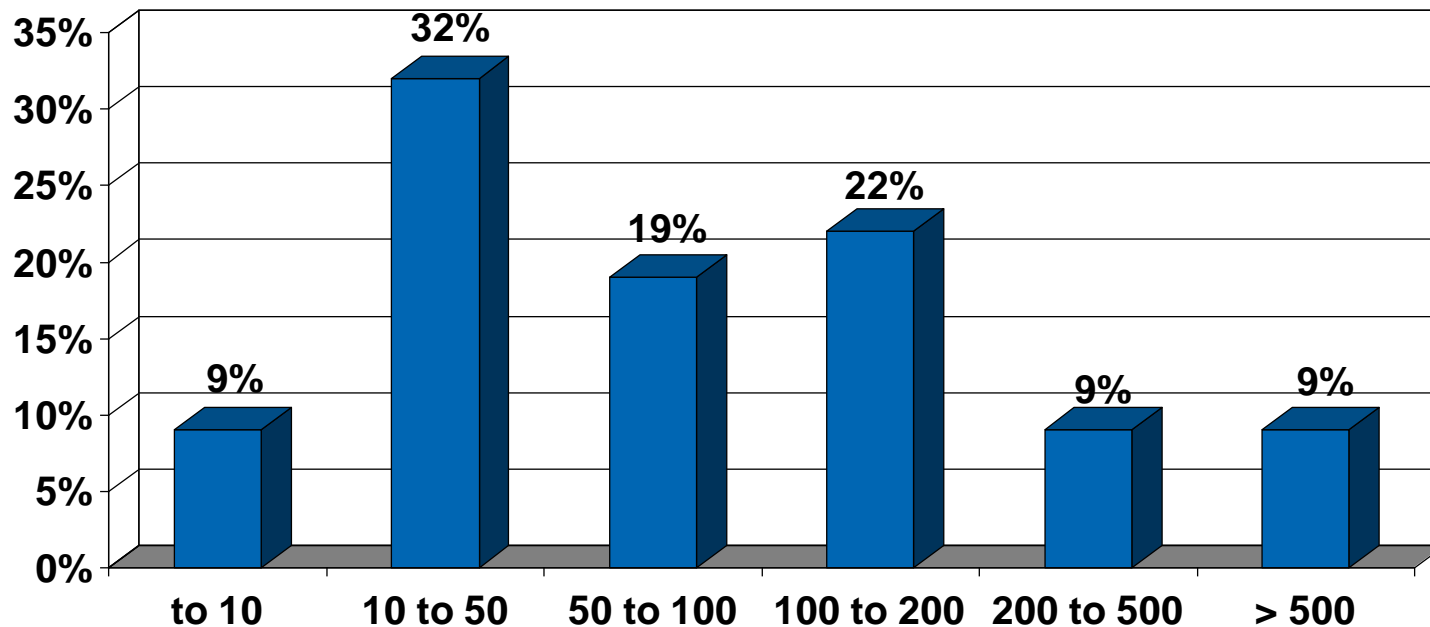
Distribution of actual participations (in €)

- Average: 3.899 Euro
- Minimum: 50 Euro
- Maximum: 80.000 Euro
- Spread (in Euro):



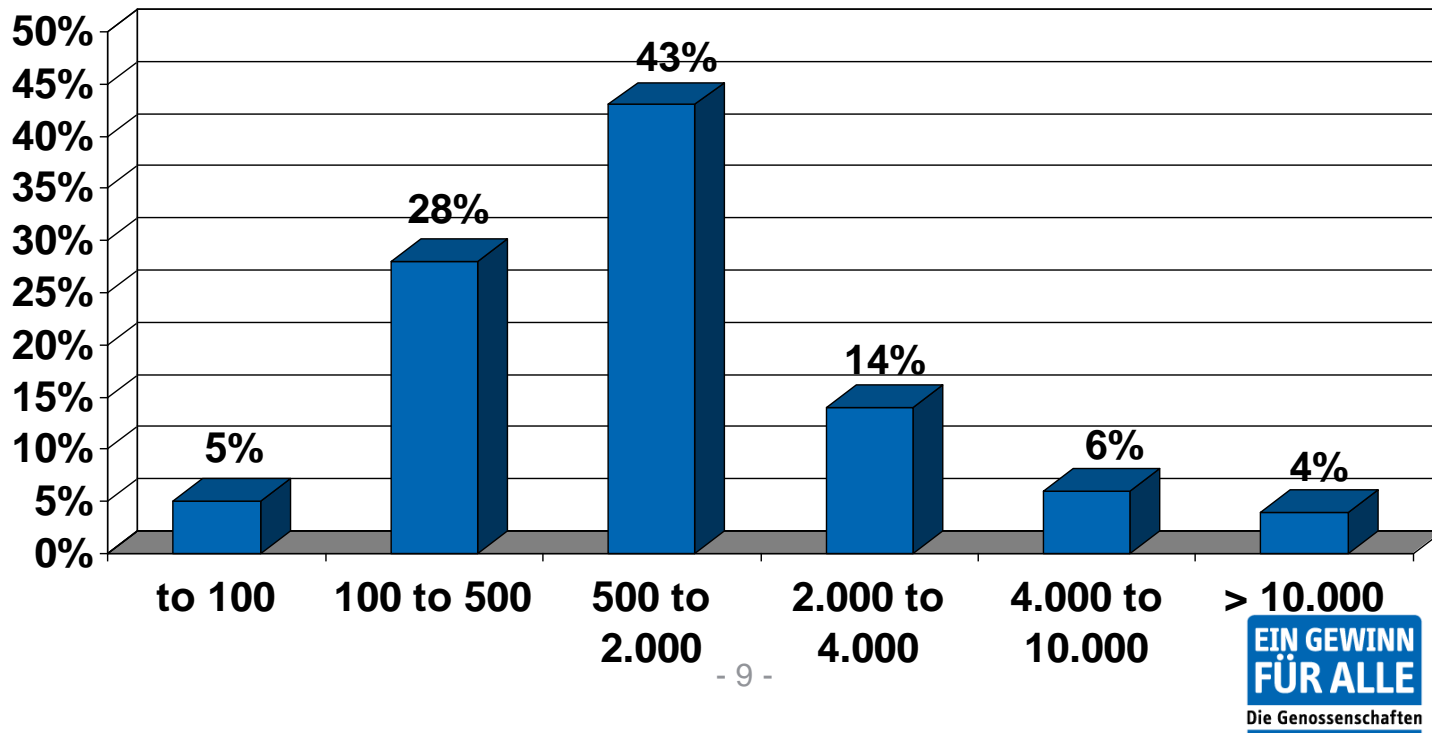
Total turnover

- Average: 485,860 Euro
- Minimum: 5,200 Euro
- Maximum: 4,000.000 Euro
- Distribution (in kEUR):



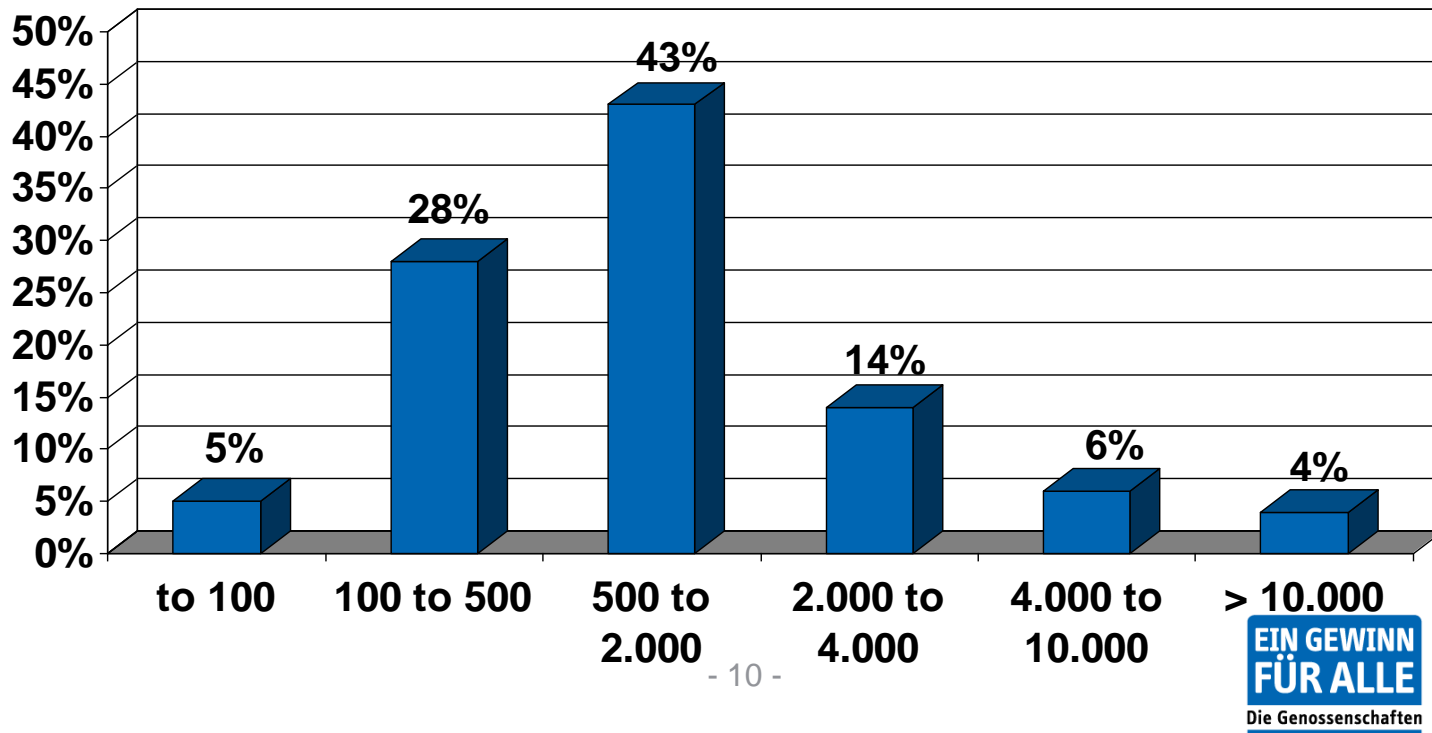
Total investments

- Average: 3,950,186 Euro
- Minimum: 130 Euro
- Maximum: 56,000,000 Euro
- Distribution (in kEUR):

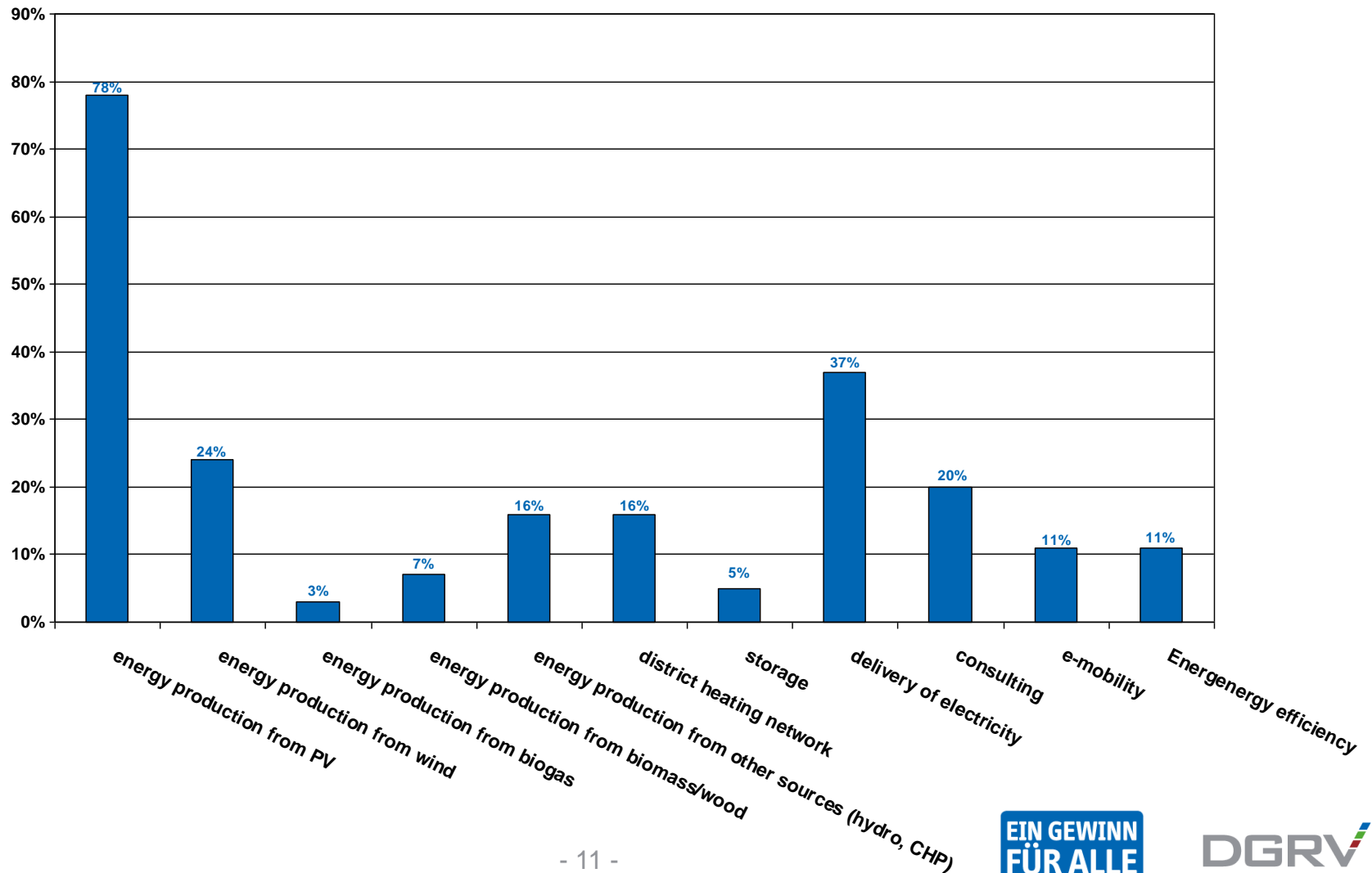


Equity ratio

- Average: 2,213,353 Euro
- Minimum: 24,100 Euro
- Maximum: 20,000,000 Euro
- Distribution (in kEUR):



In what areas is your cooperative already active?



Total figures (projections) for Germany (at December 31, 2018)

869 renewable energy cooperatives founded after 2006 with...

- 183,000 private individual members
- 714 mio. Euro member shareholdings
- 2.7 bn. Euro investments in renewable energies